

Intensiv PrepTwins^{Pat. 2564803}



Diamond Polymer Finisher
for refined shaping of all preparations

Finishing cavity and prosthetic edges is essential and preparatory to the subsequent steps. The removal of detached enamel prisms and irregular surfaces (so called wave structure) created by rotating instruments, allows an improvement and longer life span of intact restorations.



Product Description

- Diamond Polymer Finisher highly loaded in 3 different diamond grains
- The diamond grains are marked in the polymer by the colour brown (60 µm), red (40 µm) or yellow (15 µm)
- Forms: ball, cylinder, flame, football, torpedo, tapered cone
- Length: ball 2 mm, football 3.5 mm, cylinder 10 mm, flame and tapered cone 8 mm, torpedo 6 mm

Trial Kit, 60 µm - REF 2460/6
Trial Kit, 40 µm - REF 2440/6
Trial Kit, 15 µm - REF 2415/6

Intensiv PrepTwins are available in packages of 6 pieces

Colour code	Micron	Description
524	60µm	Medium
514	40µm	Fine
504	15µm	Extra fine

LENGHT
in mm

L

COLOUR CODE
Grit size indicator

DIAMETER
in ISO 1/10 mm

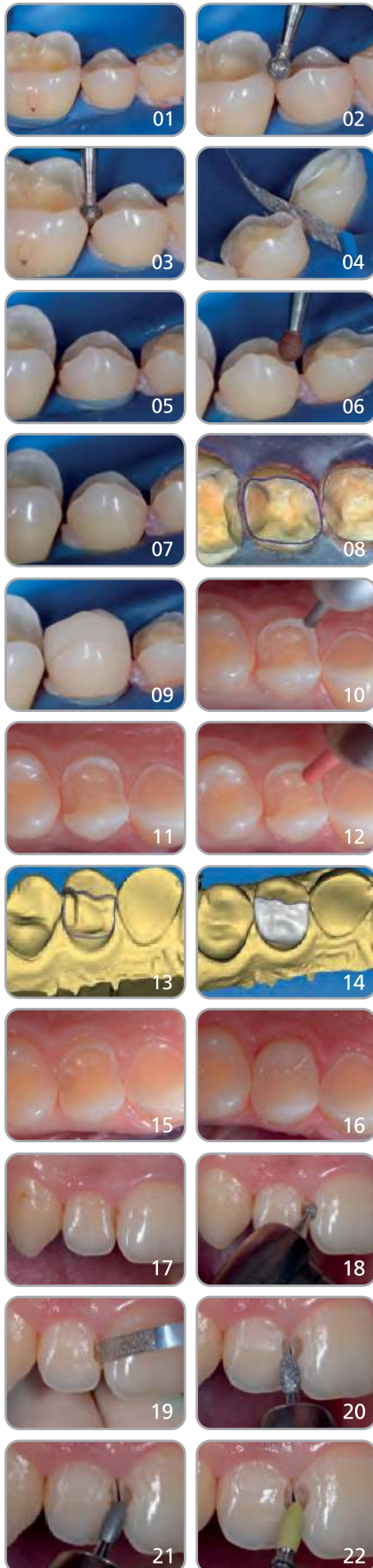
Form	Length (mm)	Diameter (mm)	Colour Code	Product Code
Ball	2.0	Ø 020	Brown	RA PT801/6
			Red	RA PT4801/6
			Yellow	RA PT5801/6
Football	3.5	Ø 020	Brown	RA PT368/6
			Red	RA PT4368/6
			Yellow	RA PT5368/6
Cylinder	10.0	Ø 020	Brown	RA PT882/6
			Red	RA PT4882/6
			Yellow	RA PT5882/6
Flame	8.0	Ø 020	Brown	RA PT862/6
			Red	RA PT4862/6
			Yellow	RA PT5862/6
Torpedo	8.0	Ø 020	Brown	RA PT847KR/6
			Red	RA PT4847KR/6
			Yellow	RA PT5847KR/6
Tapered cone	6.0	Ø 020	Brown	RA PT877K/6
			Red	RA PT4877K/6
			Yellow	RA PT5877K/6

Indications

- Finishing of the specific created preparation

Benefits

- Congruence between diamond polymer finisher and the shape of the diamond preparation instrument previously used
- Preserve specific created preparations
- Diamond coating on the metal core avoids metal signs on surface
- Selected grain in relation to the degree of shaping



Posterior bite-raising

- 01 Initial clinical case: creation of the Table top on elements 44, 45 and 46 for the production of ceramic inlays with the CAD/CAM system
- 02 Lowering of the interproximal crown margins with the FG 301, 90 µm instrument
- 03 Deepening and mesial/distal opening of the interproximal space intended for positioning of the prosthetic device
- 04 Opening of proximal contacts, performed manually with Intensiv ProxoContour Coarse, characterized by 80 µm grit and two rows of perforations
- 05 Preparation completed
- 06 Advanced preparation of the edges conducted with Intensiv PrepTwins RA PT801, 60 µm, which allows for a distinctly improved optical image capture
- 07 Obvious improvement of the margins after being treated with the Finisher
- 08 Digital image that clearly shows the preparation margin
- 09 Edges are perfectly suited to the restoration

Bite-raising erosion

- 10 Creation of inlay on element 14: preparation of the edges with diamond-coated instrument FG 307L, 90 µm
- 11 Performed preparation, elimination of insufficient composite restoration in distal area
- 12 Advanced preparation with Intensiv PrepTwins RA PT4882, 40 µm
- 13 Optical impression highlighting the excellent margin preparation
- 14 Calculated digital image of the restoration
- 15 Evidence of the improvement of the preparation margins
- 16 Case concluded, cementing of the created inlay, ideal closure between dental tissue and restoration

Class III restoration

- 17 Initial case: Class III lesions on elements 12 and 11
- 18 Preparation of the two cavities with FG 201, 80 µm diamond-coated instrument
- 19 Removal of detached enamel prisms and opening of the edges adjacent to the lesions in the palatal direction
- 20 Beveling of the margins with FG 255, 90 µm diamond-coated instrument
- 21 Finishing of the margin with FG 4255, 40 µm diamond-coated instrument
- 22 Advanced preparation and elimination of the irregularities carried out with Intensiv PrepTwins RA PT5368, 15 µm: clear improvement of the state of the preparation margin

Clinical pictures